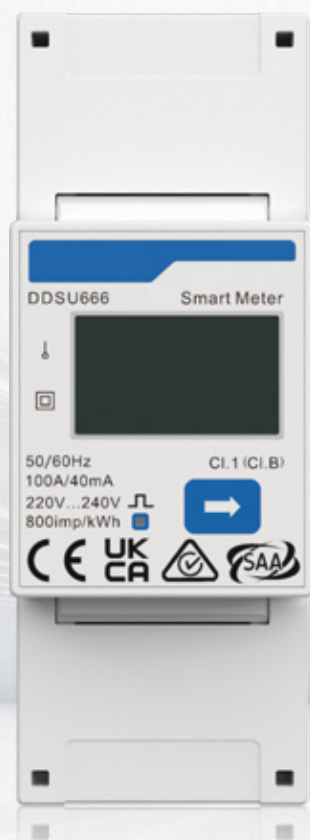


Single Phase Smart Meter with 2CT

DDSU666 with 2CT is especially designed for AC coupled senario to monitor power conditions and measure power generation and energy consumption, enabling you to keep track of the power status and regulate the power flow within the system at any time.



Model	DDSU666
Power Supply	
Grid type	Single phase
Rated voltage	230V
Frequency	50Hz/60Hz
Measurement Range	
Voltage	230V
Current	100A
Measurement Accuracy	
Active energy	Class B
Communication	
Interface	RS485
Communication protocol	Modbus RTU
Environmental Condition	
Operating temperature range	-25°C ~ +55°C
Storage temperature range	-40°C ~ +70°C
Operating humidity	≤75% (Non-condensing)
General Data	
Dimensions (H x W x D)	100×36×65.5 mm
Mounting type	DIN 35mm
Accessories	2 × CT 100A/40mA; 1 × meter communication patch cable (240mm)

DDSU666